

READING AND WRITING CHINESE IN WINDOWS XP

Compiled by Leslie Chong, February 28, 2006

Open a browser, and try to visit a web site which displays Chinese characters:

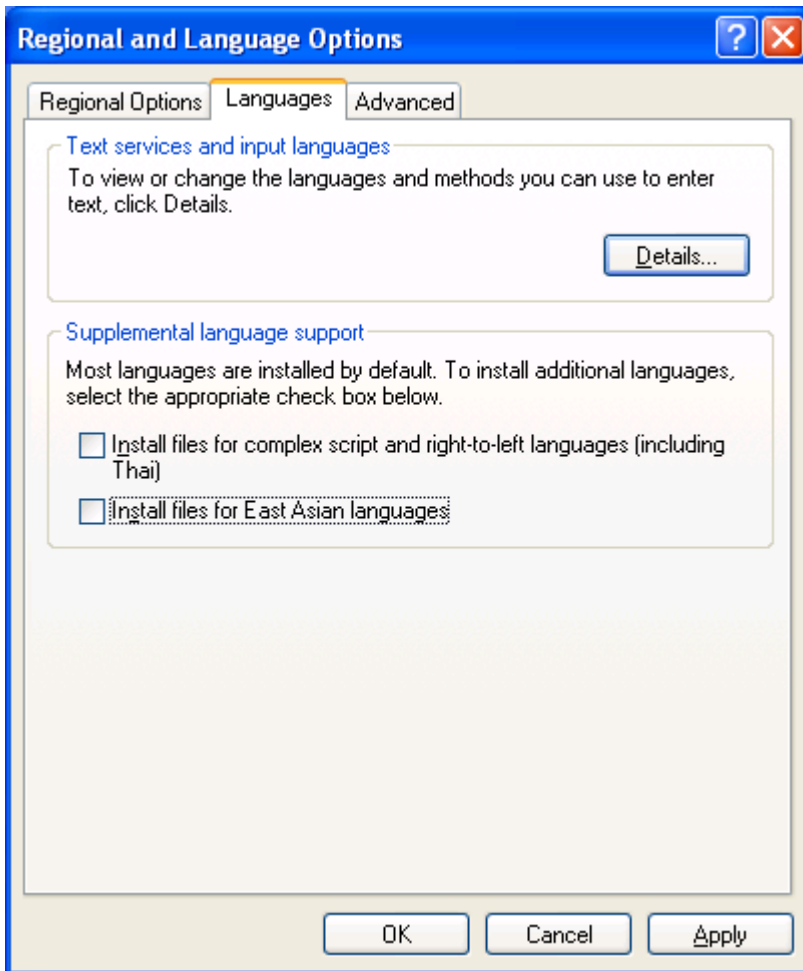


Normally, the characters should be shown properly; otherwise, there will be a series of question marks where the characters should be. If you see such question marks, your Windows XP has not been patched or installed with default options.

A Windows XP computer with Service Pack 2 would have the ISO code tables for Oriental languages (Chinese, Japanese and Korean) installed, and display the Chinese characters on the web page properly.

To be able to **input (write) Chinese**, you need to add the Microsoft Pin Yin standard as an input language.

Go to Control Panel, in the Pick a category pane, click on “Date, Time, Language, and Regional Options. Under Pick a task... click on Add other languages. The Regional and Language Options window pops up:



Check the box for “Install files for East Asian languages”.

After reboot, go back to Regional and Language Options, Languages tab:



Click on Details...



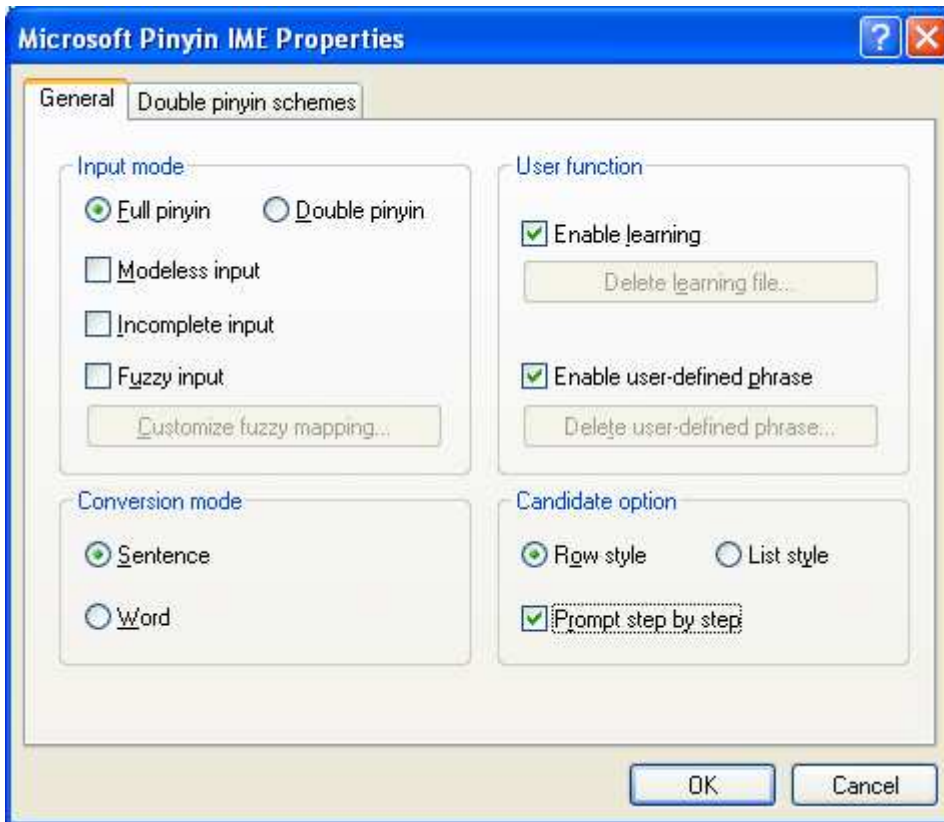
Click Add... In the Add Input language window, choose Chinese (PRC), “Chinese (Simplified) – Microsoft Pinyin IME 3,0” in the Keyboard layout / IME box. Click OK.

Back to the Text Services and Input Languages window, under Installed services, Chinese (PRC) and “Chinese (Simplified) – Microsoft Pinyin IME 3.0” Keyboard are shown as installed:



Click OK.

Go back to Installed services, highlight “Chinese (Simplified) – Microsoft Pinyin IME 3.0” and click Properties... Check “Prompt step by step” and click OK:



Click OK.